

Bim Antibody [1C2C8]
Catalog # ASC11993**Specification**

Bim Antibody [1C2C8] - Product Information

Application	WB, IF, ICC, E
Primary Accession	O43521
Other Accession	NP_619527 , 20336315
Reactivity	Human, Mouse
Host	Mouse
Clonality	Monoclonal
Isotype	IgG1
Application Notes	Bim antibody can be used for detection of Bim by Western blot at 1 µg/mL. Antibody can also be used for immunocytochemistry starting at 10 µg/mL. For immunofluorescence start at 20 µg/mL.

Bim Antibody [1C2C8] - Additional Information

Gene ID	10018
Target/Specificity	
BCL2L11;	

Reconstitution & Storage

Bim monoclonal antibody can be stored at -20°C, stable for one year.

Precautions

Bim Antibody [1C2C8] is for research use only and not for use in diagnostic or therapeutic procedures.

Bim Antibody [1C2C8] - Protein Information

Name BCL2L11

Synonyms BIM

Function

Induces apoptosis and anoikis. Isoform BimL is more potent than isoform BimEL. Isoform Bim-alpha1, isoform Bim-alpha2 and isoform Bim-alpha3 induce apoptosis, although less potent than isoform BimEL, isoform BimL and isoform BimS. Isoform Bim-gamma induces apoptosis. Isoform Bim-alpha3 induces apoptosis possibly through a caspase- mediated pathway. Isoform BimAC and isoform BimABC lack the ability to induce apoptosis.

Cellular Location

Endomembrane system; Peripheral membrane protein. Note=Associated with intracytoplasmic membranes. [Isoform BimL]: Mitochondrion. [Isoform Bim-alpha1]: Mitochondrion.

Tissue Location

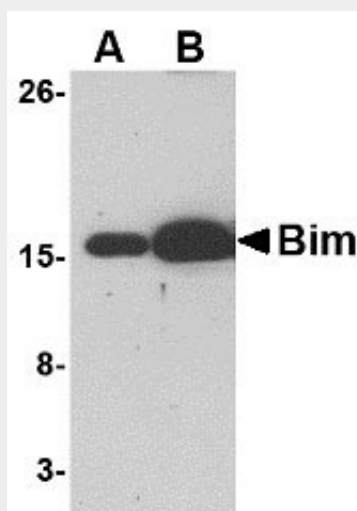
Isoform BimEL, isoform BimL and isoform BimS are the predominant isoforms and are widely expressed with tissue-specific variation. Isoform Bim-gamma is most abundantly expressed in small intestine and colon, and in lower levels in spleen, prostate, testis, heart, liver and kidney.

Bim Antibody [1C2C8] - Protocols

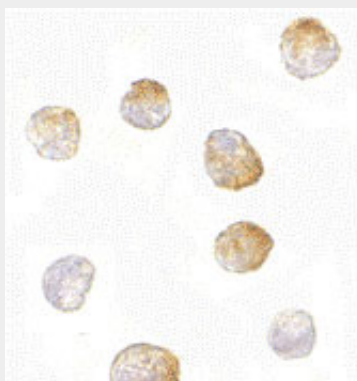
Provided below are standard protocols that you may find useful for product applications.

- [Western Blot](#)
- [Blocking Peptides](#)
- [Dot Blot](#)
- [Immunohistochemistry](#)
- [Immunofluorescence](#)
- [Immunoprecipitation](#)
- [Flow Cytometry](#)
- [Cell Culture](#)

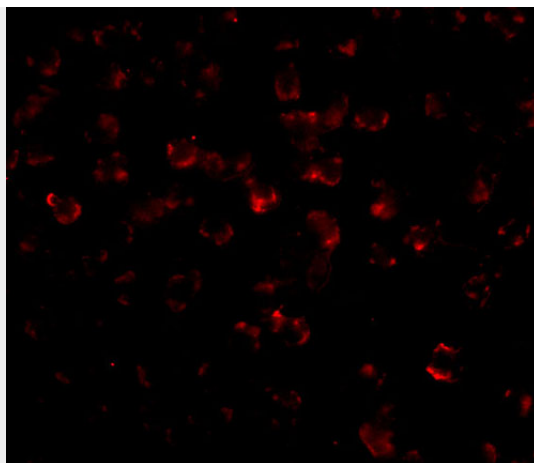
Bim Antibody [1C2C8] - Images



Western blot analysis of (A) 5 and (B) 25 ng of Bim recombinant protein with Bim antibody at 1 μ g/mL.



Immunocytochemistry of Bim in K562 cells with Bim antibody at 10 μ g/mL.



Immunofluorescence of Bim in K562 cells with Bim antibody at 20 µg/mL.

Bim Antibody [1C2C8] - Background

Bim Monoclonal Antibody: Members in the Bcl-2 family are critical regulators of apoptosis by either inhibiting or promoting cell death. Bcl-2 homology 3 (BH3) domain is a potent death domain. BH3 domain containing pro-apoptotic proteins, including Bad, Bax, Bid, Bik, and Hrk, form a growing subclass of the Bcl-2 family. Bim is another BH3 domain containing protein which can induce apoptosis. Bim interacts with diverse members in the pro-survival Bcl-2 sub-family including Bcl-2, Bcl-xL and Bcl-w. The messenger RNA of Bim is ubiquitously expressed in multiple tissues and cell lines.

Bim Antibody [1C2C8] - References

O'Connor L, Strasser A, O'Reilly LA, et al. Bim: a novel member of the Bcl-2 family that promotes apoptosis. EMBO J. 1998; 17:384-395.

Hsu SY, Lin P, and Hsueh AJ BOD (Bcl-2-related ovarian death gene) is an ovarian BH3 domain-containing proapoptotic Bcl-2 protein capable of dimerization with diverse antiapoptotic Bcl-2 members. Mol. Endocrinol. 1998; 12:1432-40.